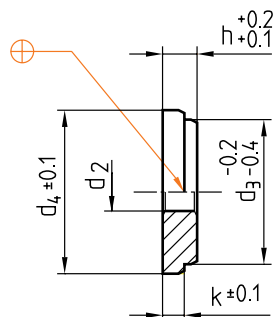


Z056/...

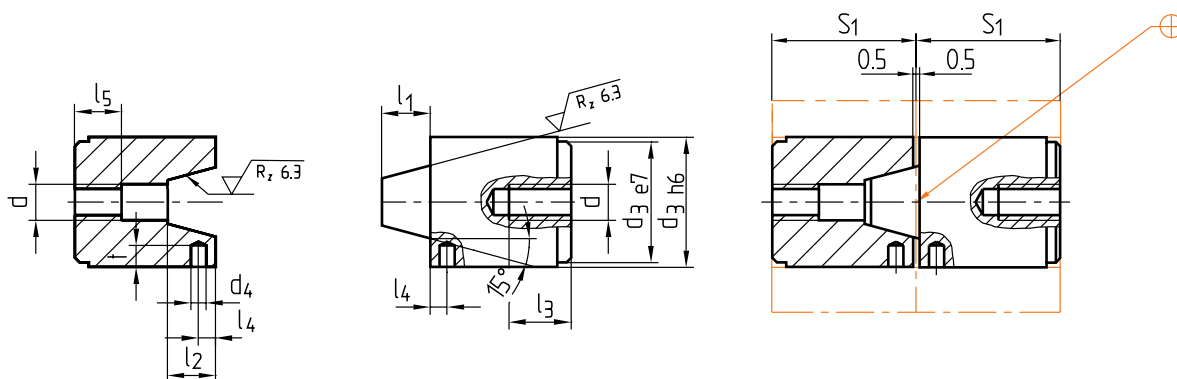
Mat.: 1.0715/50 ± 2 HRC



d ₄	d ₂	k	h	d ₃	Nr./No.
16	5,5	3,2	5	14	Z056/14
25,5	8,5	6,3	9	20	20
31,5				26	26
35,5	11		10	30	30
47,5				42	42

Z06/...

Mat.: 1.2343/49 ± 2 HRC



t	d ₄	d	l ₅	l ₄	l ₃	l ₂	l ₁	S ₁	d ₃	Nr./No.
5	4	M10	16,5	4,5	20	11,5	10,5	36	30	Z06/30
7	5		18,5	5,5		15,5	14,5	46	42	42
8	6	M12	20,5	7,5	25	18,5	17,5	56	54	54
11	8	M16	25,5	9,5	30	23,5	22,5	76	80	80

This is trial version
www.adultpdf.com